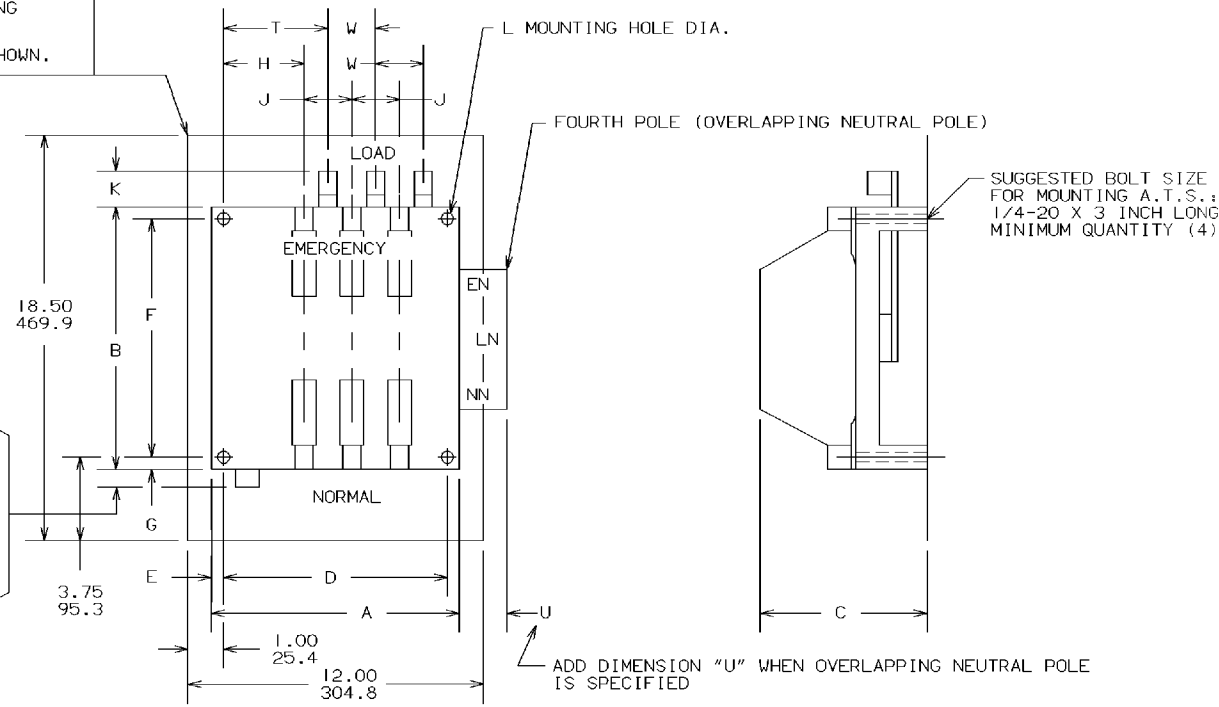


WARNING
SUPPLIED BACKING
PIECE MUST BE
INSTALLED AS SHOWN.

225 THRU 400 AMPS



STANDARD OVERHANG IS
2.00, 50.8 MM
MAXIMUM OVERHANG IS
5.00, 127.0 MM WHEN
ADDITIONAL AUXILIARY
CONTACTS ARE SUPPLIED

2, 3 AND 4 POLE (OVERLAPPING NEUTRAL POLE)

DIMENSIONS													
A	B	C	D	E	F	G	H	J	K	L	T	U	W
11.00	12.00	6.87	10.00	0.50	11.00	0.50	3.87	2.12	2.12	0.31	4.93	3.00	2.12
279.4	304.8	174.5	254.0	12.7	279.4	12.7	98.3	53.8	53.8	Ø7.9	125.2	76.2	53.8

GENERAL NOTES

- FOR TWO POLE SWITCHES, OMIT CENTER POLE.
- WHEN INSTALLING, CONNECT NORMAL, EMERGENCY, AND LOAD CONDUCTORS TO SIMILARLY MARKED TERMINALS.
- ALL INTERNAL CONNECTIONS ARE MADE AT THE FACTORY
- MAINTAIN ELECTRICAL CLEARANCE OF 0.50, 12.7 MM. MINIMUM BETWEEN LIVE METAL PARTS AND GROUNDED METAL.
- MOUNT THE TRANSFER SWITCH UNIT ON THE INSIDE BACK SURFACE AND THE CONTROL PANEL(S) ON THE INSIDE DOOR SURFACE.
- THE CONTROL PANEL IS CONNECTED TO THE TRANSFER SWITCH PANEL BY A WIRE HARNESS WITH TWO (2) QUICK DISCONNECT PLUGS. HARNESS LENGTH IS - 40.00", 1016.0 mm. ACC. 37B IS AVAILABLE. AN EXTENSION HARNESS, ADDING 72IN (1828mm). NOTE- ACC. 37B MUST BE SPECIFIED AT TIME OF ORDER.
- FOR TYPE 1 USE THE (4) CLEARANCE CORNER HOLES OR STUDS AS REQUIRED. PER DETAIL "A"-1 FOR TYPE 3R, 4, & 12 USE ALL STUDS OR HOLES, PER DETAIL "A"-2. A GASKET IS PROVIDED FOR TYPE 3R, 4, & 12

8. AN OPERATOR'S MANUAL IS FURNISHED WITH EACH AUTOMATIC TRANSFER SWITCH. REFER TO THIS PUBLICATION PRIOR TO INSTALLATION AND OPERATION OF THE SWITCH.

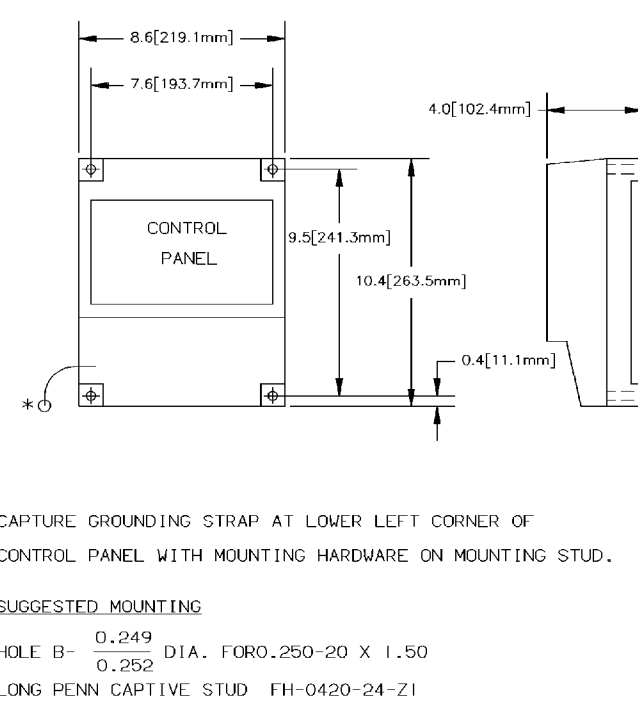
SIZES OF UL LISTED SOLDERLESS
SCREW TYPE TERMINALS FOR EXTERNAL POWER CONNECTIONS

RANGE OF AL-CU WIRE SIZE	
TWO #1/0 AWG TO 250 MCM OR ONE #4 AWG TO 600 MCM	

APPROXIMATE SHIPPING WEIGHT, LBS (KG)
(WEIGHT INCLUDES STANDARD TRANSFER SWITCH & CONTROLS)
2, 3 & 4 POLES (OVERLAPPING NEUTRAL POLE)

POLES	2	3	4
WEIGHT	37 (17)	45 (21)	53 (24)

CONTROL PANEL MOUNTING DATA



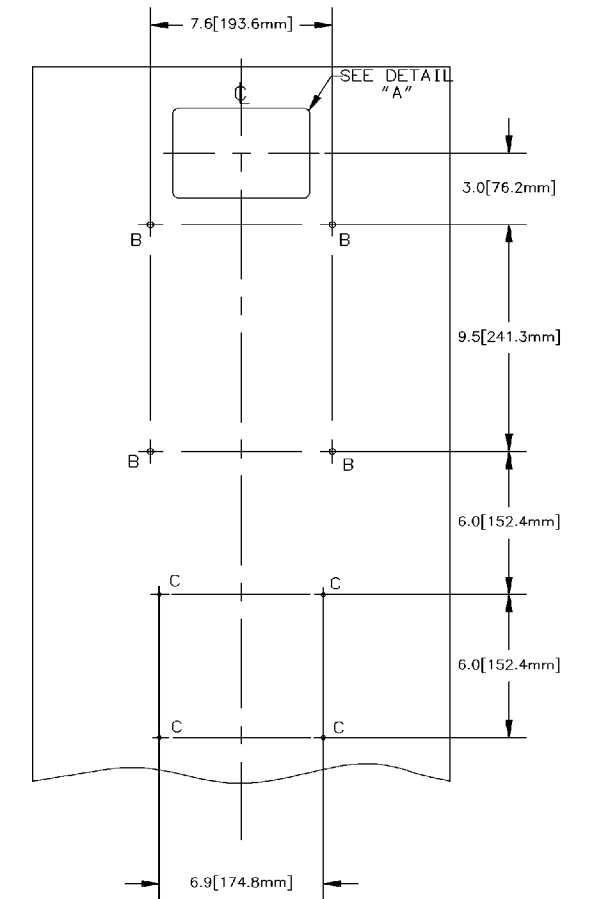
*CAPTURE GROUNDING STRAP AT LOWER LEFT CORNER OF CONTROL PANEL WITH MOUNTING HARDWARE ON MOUNTING STUD.

SUGGESTED MOUNTING

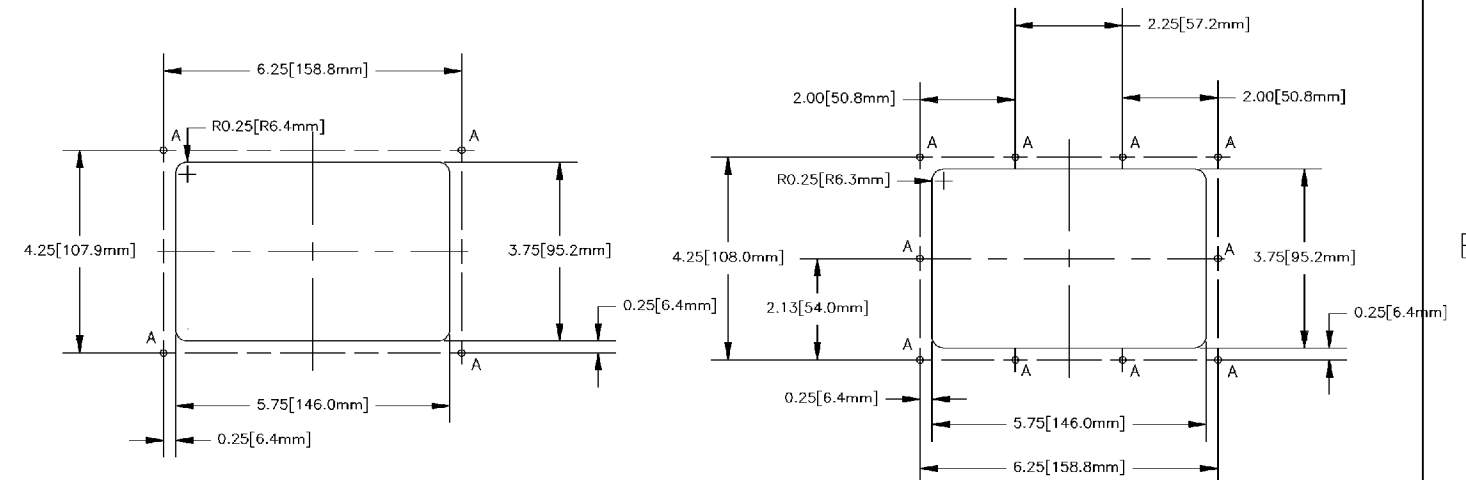
HOLE B - $\frac{0.249}{0.252}$ DIA. FOR 0.250-20 X 1.50
LONG PENN CAPTIVE STUD FH-0420-24-Z1

HOLE C - $\frac{0.163}{0.166}$ DIA. FOR 0.164-32 X 0.313
LONG PENN CAPTIVE STUD FH-832-5-Z1

CONTROL PANEL & CONTROLS MOUNTING



CONTROLS (CUTOUT) DETAIL "A" (REFER NOTE 7)



DETAIL "A" - 1

DETAIL "A" - 2

NOTES:

- CUTOUT DETAIL "A"-1 IS FOR TYPE 1 ENCLOSURE.
- CUTOUT DETAIL "A"-2 IS FOR TYPE 3R, TYPE 12 AND TYPE 4 ENCLOSURE.

SUGGESTED MOUNTING

HOLE 'A' - $\frac{0.137}{0.140}$ DIA. FOR
0.138-32 X 0.625 LONG PENN. ENGINEERING &
MFG. CO. SELF CLINCHING CAPTIVE STUD NO.
FH-632-8-Z1

COMPOSITE OUTLINE AND MOUNTING DIMENSIONS FOR OPEN TYPE 2 & 3 POLE W/O NEUTRAL 225 THROUGH 400 AMPERE ASCO® SERIES 300 AUTOMATIC TRANSFER SWITCHES

PROJECT NAME:		COMPOSITE OUTLINE	
DRAWN BY: YZ		DATE: 3/97	
CHECKED:		MANUFACTURING TOLERANCES TO BE IN ACCORDANCE WITH AS20 PROCEDURE MP-1-003 FOR PLASTIC PARTS SEE MP-1-003	
DRAWING APPROVAL:		PROPERTY OF ASCO POWER TECHNOLOGIES. USE PERMITTED FOR OUR WORK ONLY. ALL RIGHTS OF DESIGN OR INVENTION ARE RESERVED.	
FINAL APPROVAL: YZ		DATE: 3/97	
ASCO®		ASCO POWER TECHNOLOGIES, L.P. FLORHAM PARK, NEW JERSEY 07832 U.S.A.	
SUBSIDIARY DISTRIBUTION		THIRD ANGLE PROJECTION	
COMPUTER GENERATED DRAWING		SCALE: DWG. NO. DS613316-002	
CHANGE LETTER: C		ECN NO.: 157034	
ISSUED		DATE: 3/25/97	
TR: WK		3/30/01	
YZ: YZ		8/97	
YZ: YZ		7/8/97	
YZ: YZ		3/25/97	
FILE A1		SHEET	