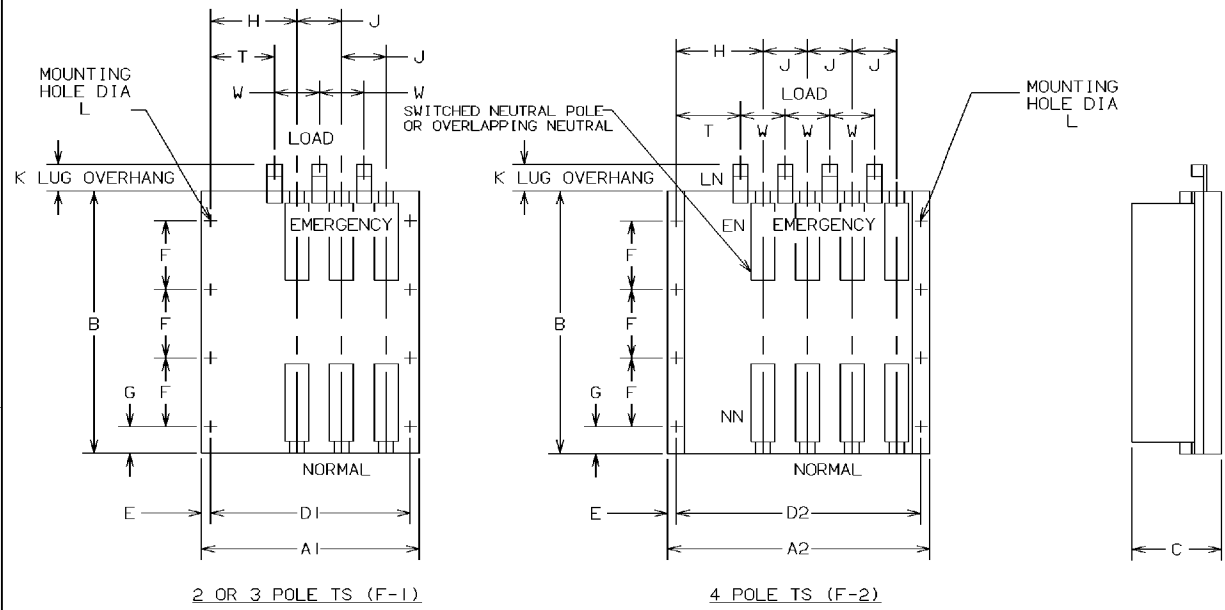


600 THRU 800 AMP



DIMENSIONS																			
A1	A2	B	C	D1	D2	E	F	G	H	J	K	L	M	N	P	R	S	T	W
19.25	22.75	25.00	11.00	18.37	21.87	0.43	7.50	1.25	6.87	3.50	1.75	0.50	—	—	—	—	—	5.12	3.50
489.0	577.8	635.0	279.4	466.6	555.5	10.9	190.5	31.8	174.5	88.9	44.5	Ø12.7	—	—	—	—	—	130.0	88.9

GENERAL NOTES

- FOR TWO POLE SWITCHES, OMIT CENTER POLE (F-1).
- WHEN INSTALLING, CONNECT NORMAL, EMERGENCY AND LOAD CONDUCTORS TO SIMILARLY MARKED TERMINALS.
- ALL INTERNAL CONNECTIONS ARE MADE AT THE FACTORY.
- MAINTAIN ELECTRICAL CLEARANCE OF 1.00 (25.4 mm). MINIMUM BETWEEN LIVE METAL PARTS AND GROUNDED METAL.
- MOUNT THE TRANSFER SWITCH UNIT ON THE INSIDE BACK SURFACE AND THE CONTROL PANEL(S) ON THE INSIDE DOOR SURFACE.
- THE CONTROL PANEL IS CONNECTED TO THE TRANSFER SWITCH PANEL BY A WIRE HARNESS WITH TWO (2) QUICK DISCONNECT PLUG. HARNESS LENGTH IS - 50.00(1270.0 mm). ACC. 37B IS AVAILABLE. AN EXTENSION HARNESS, ADDING 72IN (1828mm). NOTE- ACC. 37B MUST BE SPECIFIED AT TIME OF ORDER.
- FOR TYPE 1 USE THE (4) CLEARANCE CORNER HOLES OR STUDS AS REQUIRED, PER DETAIL "A"-1 FOR TYPE 3R, 4, & 12 USE ALL STUDS OR HOLES, PER DETAIL "A"-2. A GASKET IS PROVIDED FOR TYPE 3R, 4, & 12.
- AN OPERATOR'S MANUAL IS FURNISHED WITH EACH AUTOMATIC TRANSFER SWITCH. REFER TO THIS PUBLICATION PRIOR TO INSTALLATION AND OPERATION OF THE SWITCH.

SIZES OF UL LISTED SOLDERLESS SCREW TYPE TERMINALS FOR EXTERNAL POWER CONNECTIONS

RANGE OF AL-CU WIRE SIZE	THREE #2 AWG TO 600 MCM
--------------------------	-------------------------

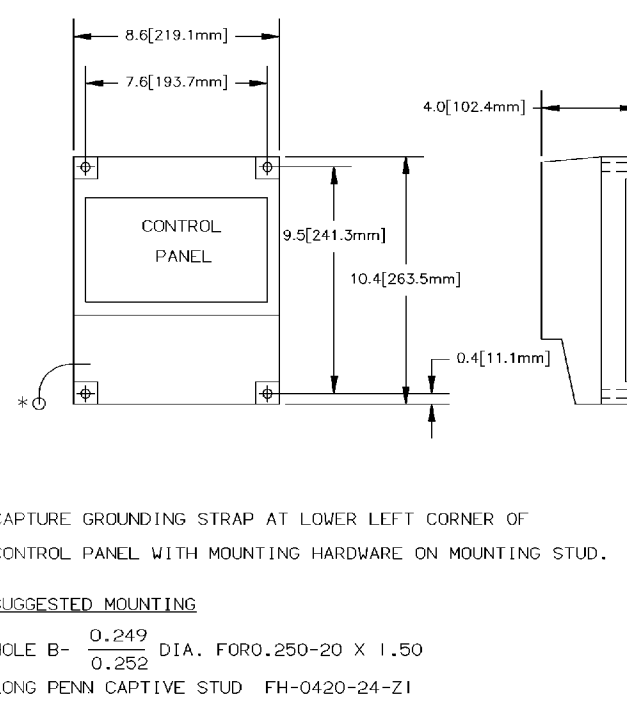
SUGGESTED BOLT SIZE FOR MOUNTING ATS

3/8-16 X 1 1/2 INCH LG MINIMUM QTY. (8)

APPROXIMATE SHIPPING WEIGHT, LBS (KG)
(WEIGHT INCLUDES STANDARD TRANSFER SWITCH & CONTROLS) 2, 3 & 4 POLES TS

POLES	2	3	4
WEIGHT	135 (62)	145 (66)	155 (71)

CONTROL PANEL MOUNTING DATA



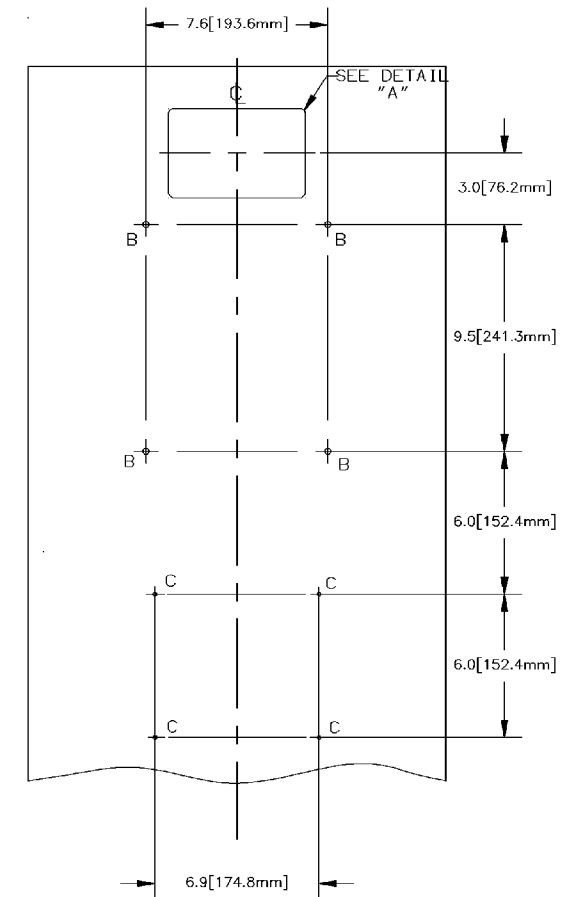
*CAPTURE GROUNDING STRAP AT LOWER LEFT CORNER OF CONTROL PANEL WITH MOUNTING HARDWARE ON MOUNTING STUD.

SUGGESTED MOUNTING

HOLE B- $\frac{0.249}{0.252}$ DIA. FOR 0.250-20 X 1.50
LONG PENN CAPTIVE STUD FH-0420-24-Z1

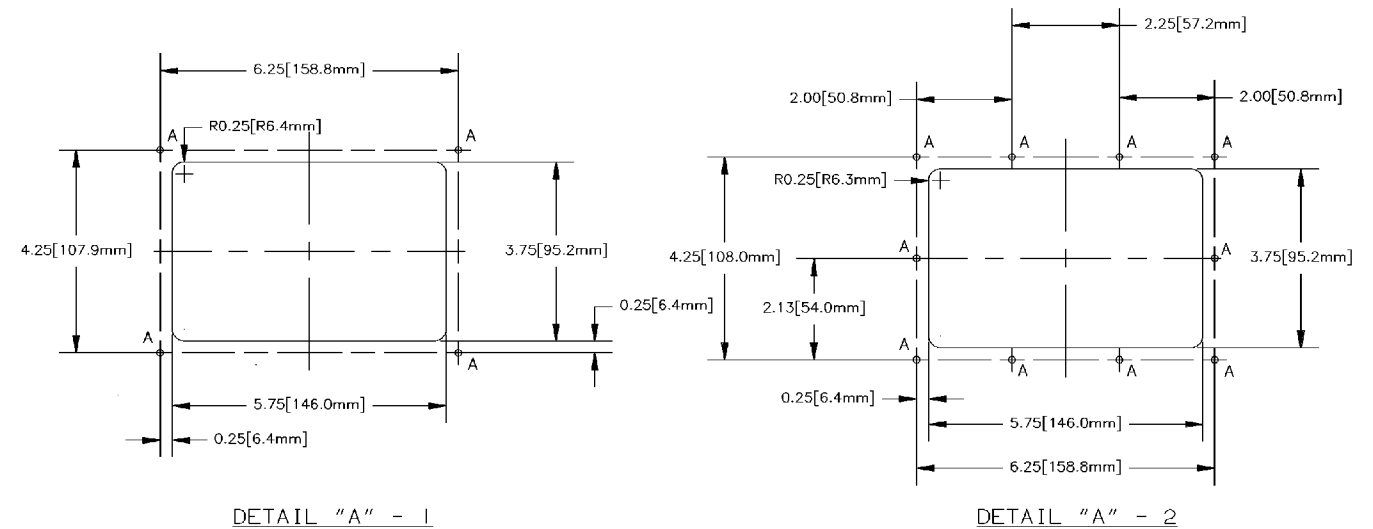
HOLE C- $\frac{0.163}{0.166}$ DIA. FOR 0.164-32 X 0.313
LONG PENN CAPTIVE STUD FH-832-5-Z1

CONTROL PANEL & CONTROLS MOUNTING



CONTROLS (CUTOUT) DETAIL "A"

(REFER NOTE 7)



NOTES:

- CUTOUT DETAIL "A"-1 IS FOR TYPE 1 ENCLOSURE.
- CUTOUT DETAIL "A"-2 IS FOR TYPE 3R, TYPE 12 AND TYPE 4 ENCLOSURE.

SUGGESTED MOUNTING

HOLE 'A'- $\frac{0.137}{0.140}$ DIA. FOR
0.138-32 X 0.625 LONG PENN. ENGINEERING &
MFG. CO. SELF CLINCHING CAPTIVE STUD NO.
FH-632-8-Z1

COMPOSITE OUTLINE AND MOUNTING DIMENSIONS FOR OPEN TYPE 2 & 3 POLE W/O NEUTRAL 600 THROUGH 800 AMPERE ASCO® SERIES 300 AUTOMATIC TRANSFER SWITCHES

PROJECT NAME:		[COMPOSITE OUTLINE]	
DRAWN BY:		YZ 3/97	
CHECKED:		[]	
DRAWING APPROVAL:		[]	
FINAL APPROVAL:		YZ 3/97	
PROPERTY OF ASCO POWER TECHNOLOGIES. USE PERMITTED FOR OUR WORK ONLY. ALL RIGHTS OF DESIGN OR INVENTION ARE RESERVED.		ASCO® ASCO POWER TECHNOLOGIES, L.P. FLORHAM PARK, NEW JERSEY 07832 U.S.A.	
SCALE:	DWG. NO.:	DS613316-003	
FILE:	ACAD:	FILE A2	
CHANGE LETTER:	ECN NO.:	157034	
BY:	APP.:	DATE:	
TR:		3/30/01	
YZ:		8/97	
YZ:		7/8/97	
YZ:		3/25/97	
SUBSIDIARY DISTRIBUTION			
AC:	AN:	AM:	AL:
CH:	AV:	AA:	PS:
AC:	AP:	AC:	AS:
COMPUTER GENERATED DRAWING			
CHANGE LETTER C ECN NO. 157034 SHEET			