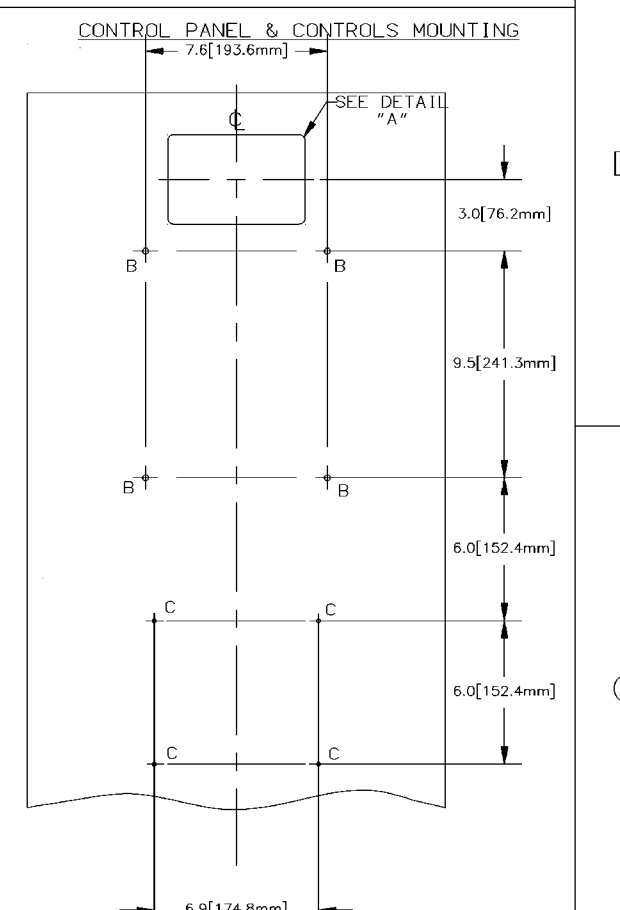
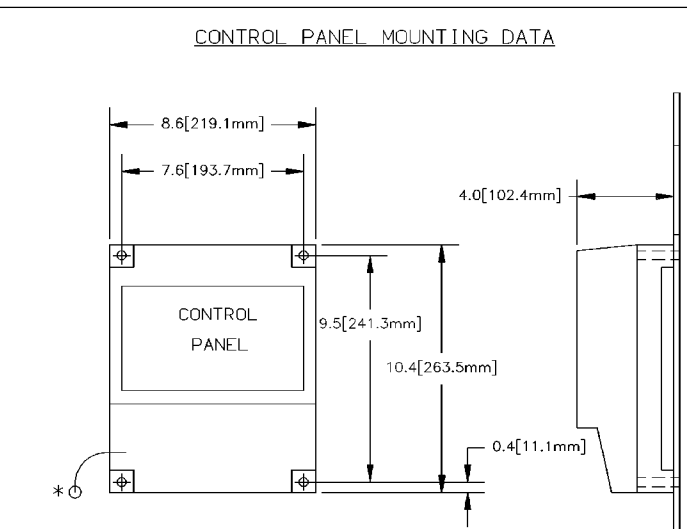
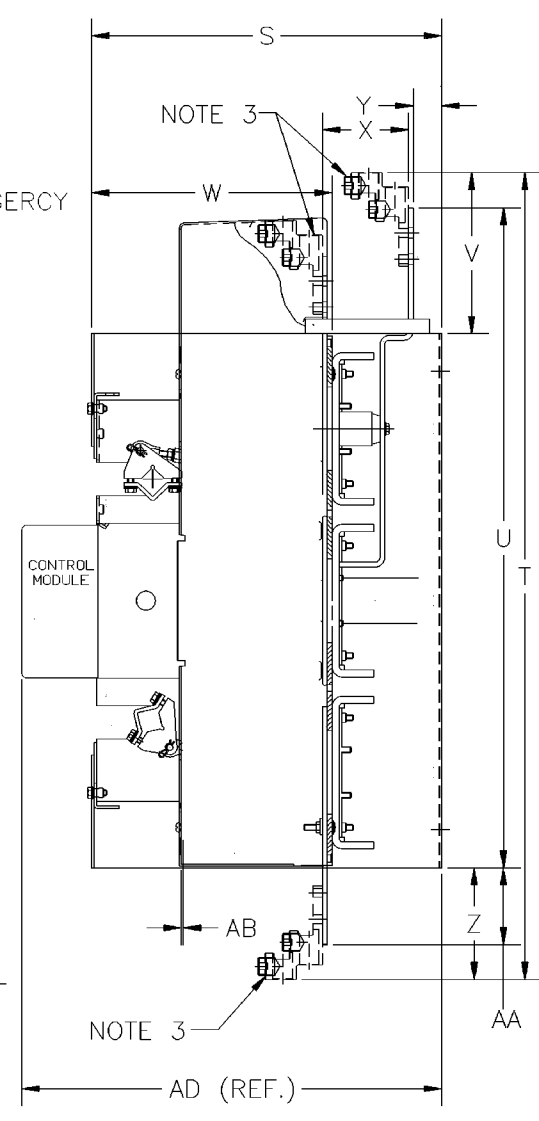
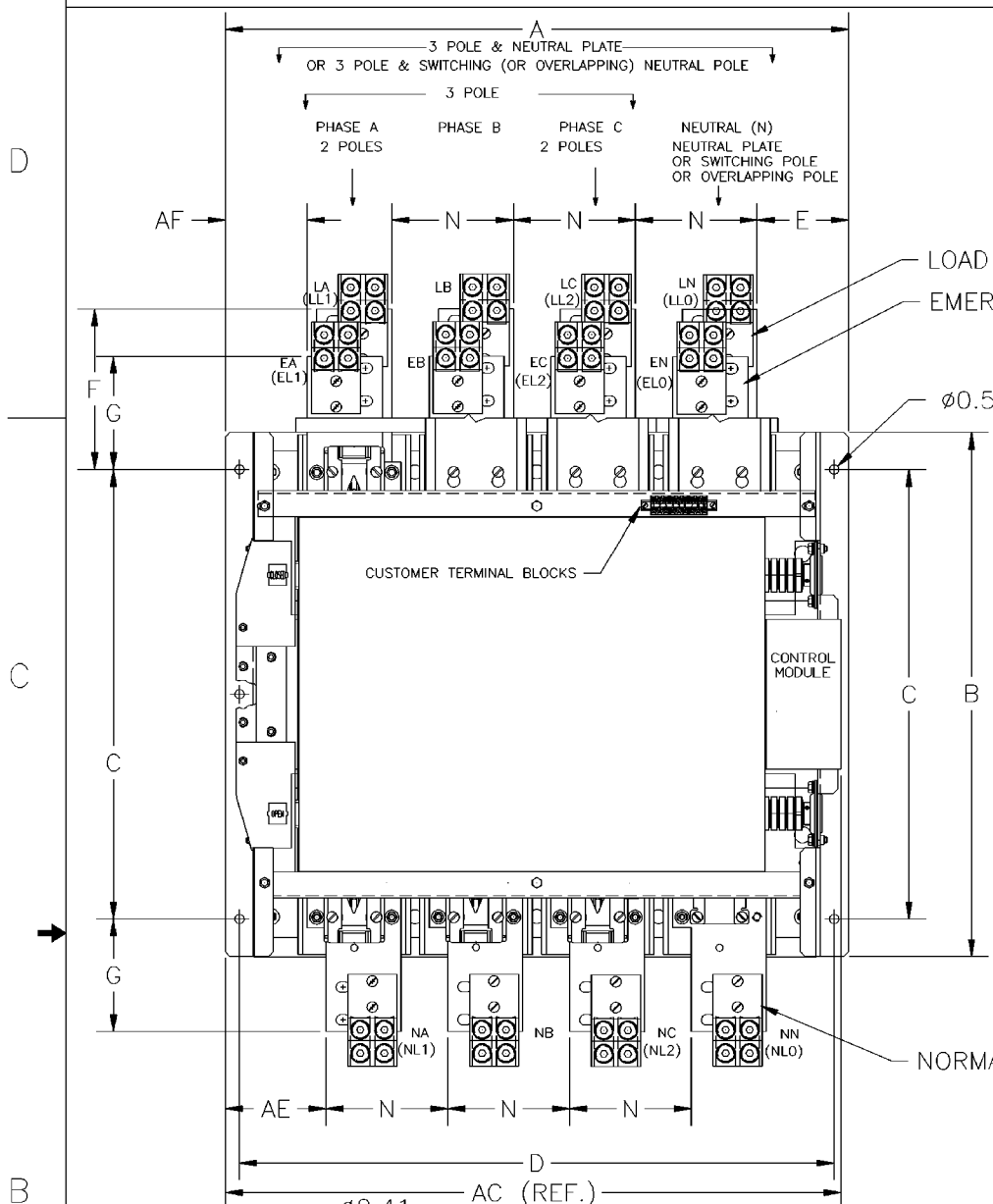


COMPOSITE OUTLINE FOR **ASCO** SERIES A300 1000-1200 AMPERE TRANSFER SWITCHES



* CAPTURE GROUNDING STRAP AT LOWER LEFT CORNER OF CONTROL PANEL WITH MOUNTING HARDWARE ON MOUNTING STUD.

SUGGESTED MOUNTING

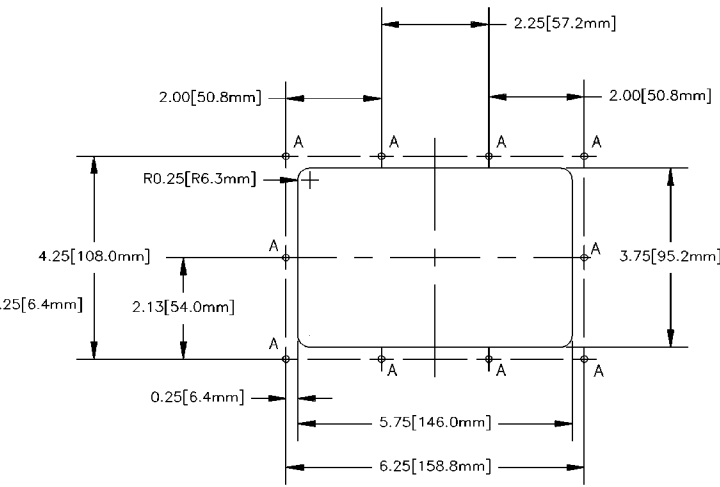
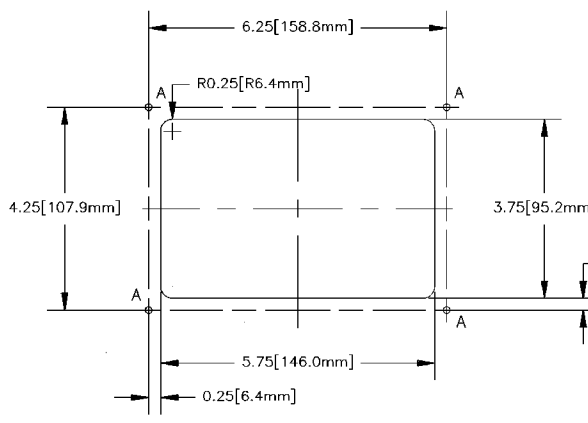
HOLE B- 0.249 DIA. FOR 0.250-20 X 1.50
0.252

LONG PENN CAPTIVE STUD FH-0420-24-Z1

HOLE C- 0.163 DIA. FOR 0.164-32 X 0.313
0.166

LONG PENN CAPTIVE STUD FH-832-5-Z1

CONTROLS (CUTOUT) DETAIL "A" (REFER NOTE 7)



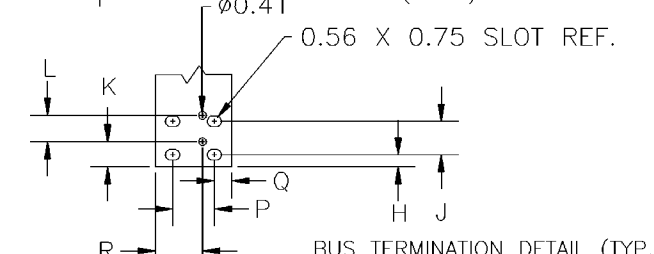
NOTES:

1. CUTOUT DETAIL "A"-1 IS FOR TYPE 1 ENCLOSURE.

2. CUTOUT DETAIL "A"-2 IS FOR TYPE 3R, TYPE 12 AND TYPE 4 ENCLOSURE.

SUGGESTED MOUNTING

HOLE 'A'- 0.137 DIA. FOR 0.140
0.138-32 X 0.625 LONG PENN. ENGINEERING & MFG. CO. SELF CLINCHING CAPTIVE STUD NO. FH-632-8-Z1



GENERAL NOTES

1. THE SWITCH CONFIGURATION IS FOR TOP EMERGENCY & LOAD AND BOTTOM NORMAL.
2. A FULL RATED NEUTRAL (SOLID COPPER BUS) CONNECTION FOR EACH SOURCE AND LOAD IS PROVIDED AS STANDARD. A NEUTRAL SWITCHING POLE OR OVERLAPPING NEUTRAL IS OPTIONAL.
3. MECHANICAL (SCREW TYPE) AL/CU TERMINAL LUGS ARE SUITABLE FOR (4) 1/0-750 MCM CABLES.
4. A NEUTRAL SWITCHING POLE IS SHOWN FOR REFERENCE.
5. WHEN INSTALLING CONDUCTORS, CONNECT TO SIMILARLY MARKED PHASES OF NORMAL, EMERGENCY & LOAD.
6. ALL INTERNAL CONNECTIONS ARE MADE AT FACTORY.
7. MAINTAIN ELECTRICAL CLEARANCE OF 1 INCH (25.4 mm) BETWEEN LIVE METAL PARTS AND GROUNDED METAL.
8. WHEN MOUNTING THE TRANSFER SWITCH IN THE ENCLOSURE, THE CONTROL PANEL AND OPERATOR CONTROLS SHOULD BE MOUNTED ON THE INSIDE, REAR SURFACE OF THE DOOR.
9. THE CONTROL PANEL(S) IS CONNECTED TO THE TRANSFER SWITCH BY A HARNESS WITH A QUICK DISCONNECT PLUG(S). THE HARNESS EXITS THE TRANSFER SWITCH ON THE RIGHT SIDE AND IS APPROXIMATELY 60 INCHES (1.5M) LONG. ACC 37B IS AVAILABLE, AN EXTENSION HARNESS, ADDING 72IN (1828mm).
10. FOR TYPE 1 USE THE (4) CLEARANCE CORNER HOLES OR STUDS AS REQUIRED PER DETAIL 'A'-1 FOR TYPE 3R, 4, & 12 USE ALL STUDS OR HOLES PER DETAIL 'A'-2. A GASKET IS PROVIDED FOR TYPE 3R, 4, & 12.

OPERATOR CONTROLS:

SIZES OF UL LISTED SCREW TYPE TERMINALS										
CABLE ACCOMMODATIONS (PER PHASE & NEUTRAL)										
(4) 1/0 - 750 MCM AL/CU										
BUS BAR PER PHASE BOLTING SURFACE										
0.25 X 4.00 IN, 6.4 X 101.6 MM										
DIMENSIONS										
A	B	C	D	E	F	G	H	J	K	
33.27	28.00	24.00	31.75	4.88	8.56	6.03	0.63	1.75	1.31	
845.1	711.2	609.6	806.5	124.0	217.4	153.2	15.88	44.45	33.3	
DIMENSIONS										
L	M	N	P	Q	R	S	T	U	V	
1.37		6.50	2.18	0.91	2.43	18.34	42.3	34.58	8.40	
34.80		165.1	55.37	23.11	61.70	465.8	1074.4	878.3	213.4	
DIMENSIONS										
W	X	Y	Z	AA	AB	AC	AD	AE	AF	
12.50	4.50	1.50	5.90	4.04	0.112	33.00	21.25	5.35	4.36	
317.5	114.3	38.1	149.9	102.6	2.85	838.2	539.8	135.9	110.7	

PROJECT NAME: COMPOSITE OUTLINE

SERIES 300 TS 1000-1200 AMP

THIRD ANGLE PROJECTION

MANUFACTURING TOLERANCES TO BE IN ACCORDANCE WITH ASCO PROCEDURE MP-1-003. FOR PLASTIC PARTS SEE MP-1-055.

PROPERTY OF AUTOMATIC SWITCH COMPANY. USE PERMITTED FOR OUR WORK ONLY. ALL RIGHTS OF DESIGN OR INVENTION ARE RESERVED.

Automatic Switch Co. FLORHAM PARK, NEW JERSEY 07932 PRINTED IN U.S.A.

BY	DATE	ASSEM. REF. NO.
YZ	3/97	

SCALE	FILE
SIZE (DWG. NO.)	
DS1613316-004	
CHANGE LETTER	ECN NO.
B	145463